



Nature-based solutions for the green economy

reservas
VOTORANTIM

Reservas Votorantim

RV is a **developer of projects for the green economy** focused on nature-based solutions.



We prove that the sustainable use of natural resources is possible by **combining conservation and revenue generation with ESG impact.**

Reservas Votorantim: business verticals

LAND MANAGEMENT

Conserving biodiversity
Developing communities
Generating value

Management of reservations, development of multiple land-use strategies, and environmental compliance services

BIODIVERSITY INITIATIVES

Unlocking the potential of the forest

Mapping biodiversity through scientific research and biotechnology
Offering sustainable solutions for ecological restoration initiatives with native flora production

CARBON

Creating viable alternatives for conservation

Leading projects and initiatives to identify and measure carbon in storage and forest sequestration
Developing alternatives for Brazilian biomes

Reservas Votorantim: forested reservations

RV manages two self-declared Private Sustainable Development Reserves in Brazil



Legado das Águas



Largest private Atlantic Forest reserve in the country, with 31,000 ha, in the countryside of São Paulo. It combines forest protection with activities of the new economy.

Legado Verdes do Cerrado

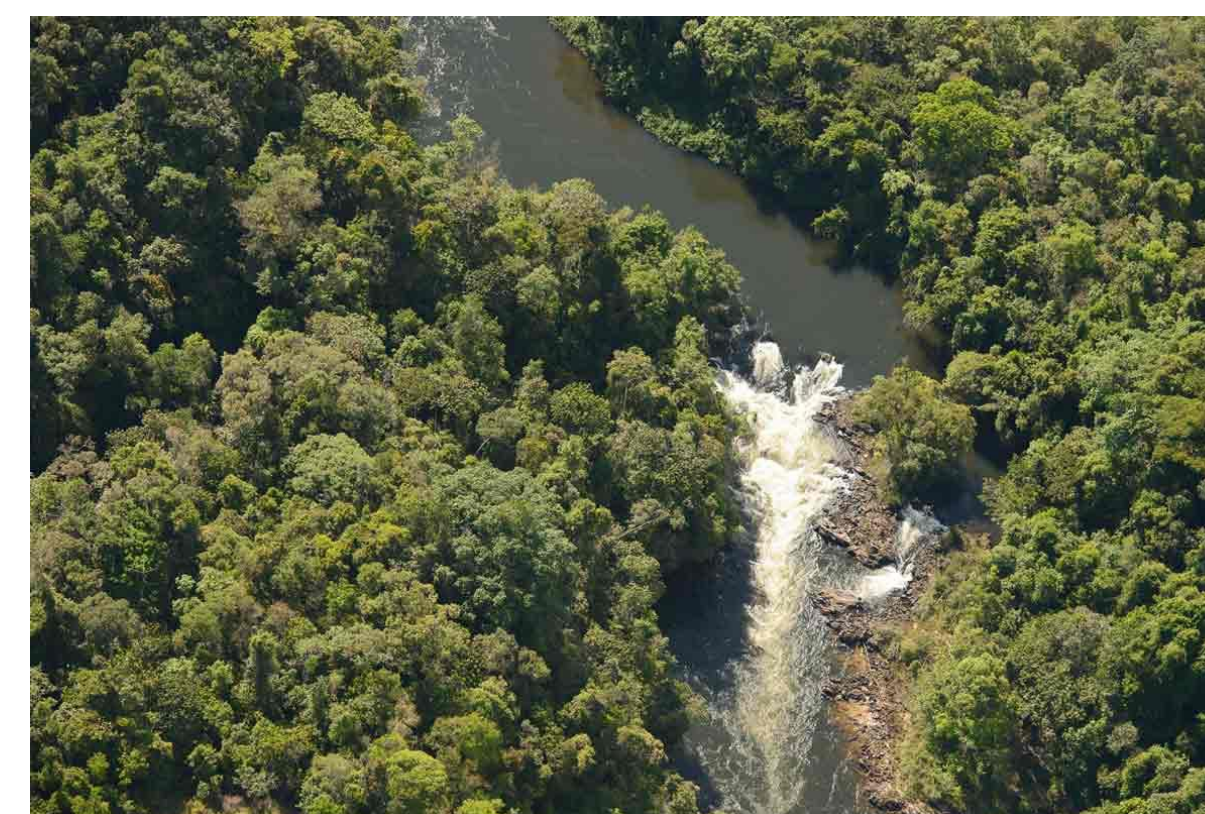
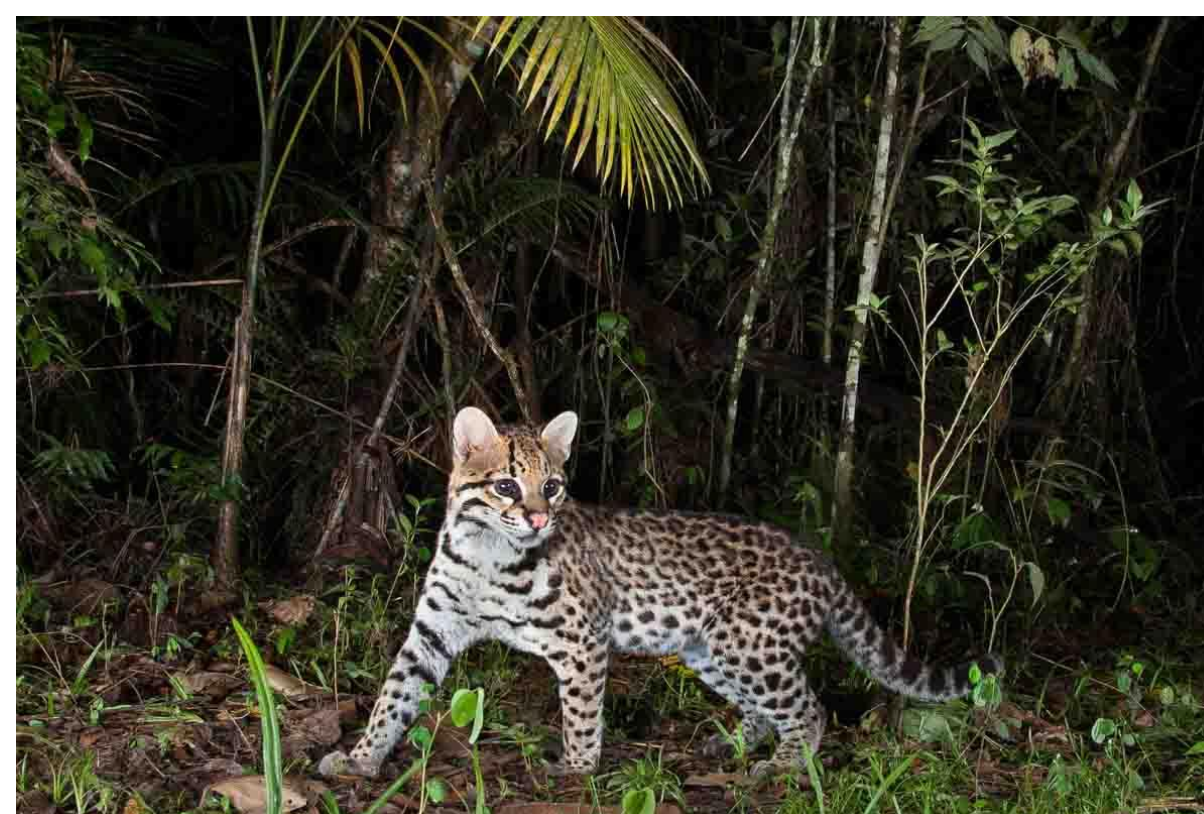
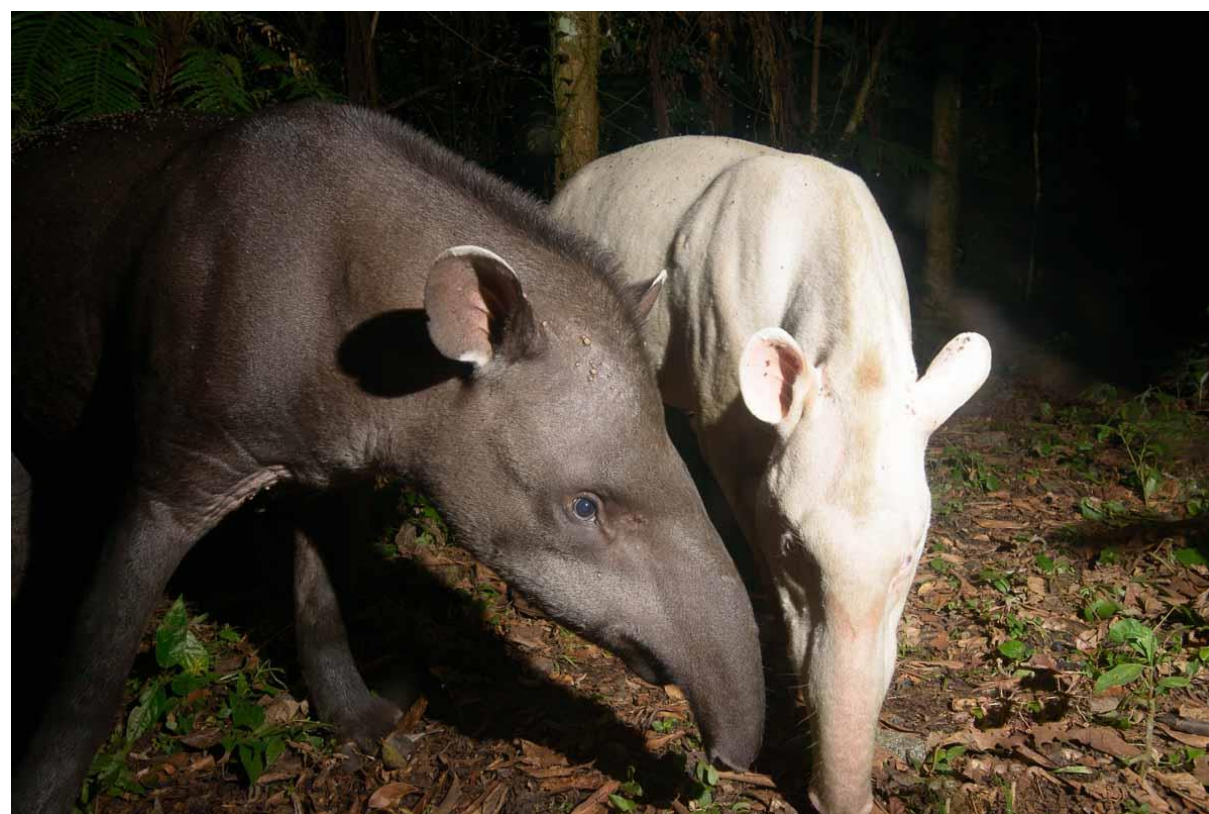
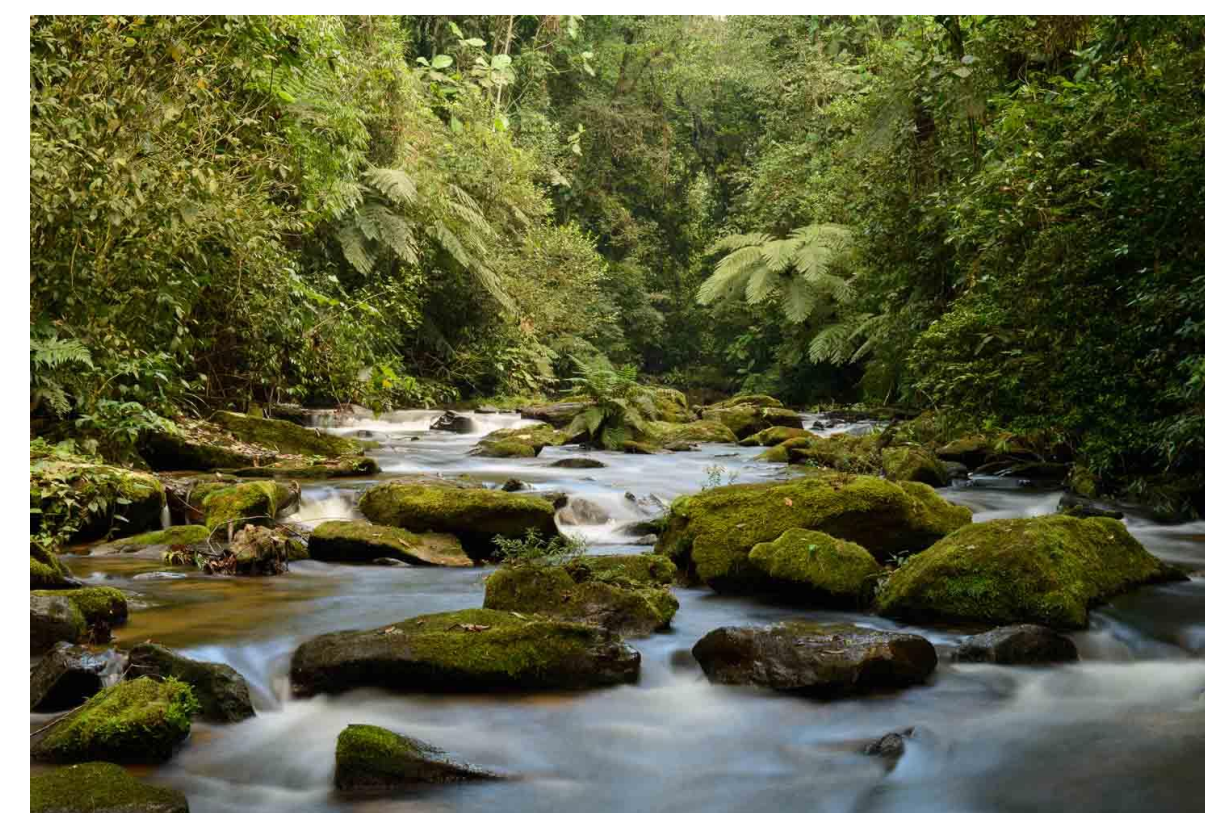
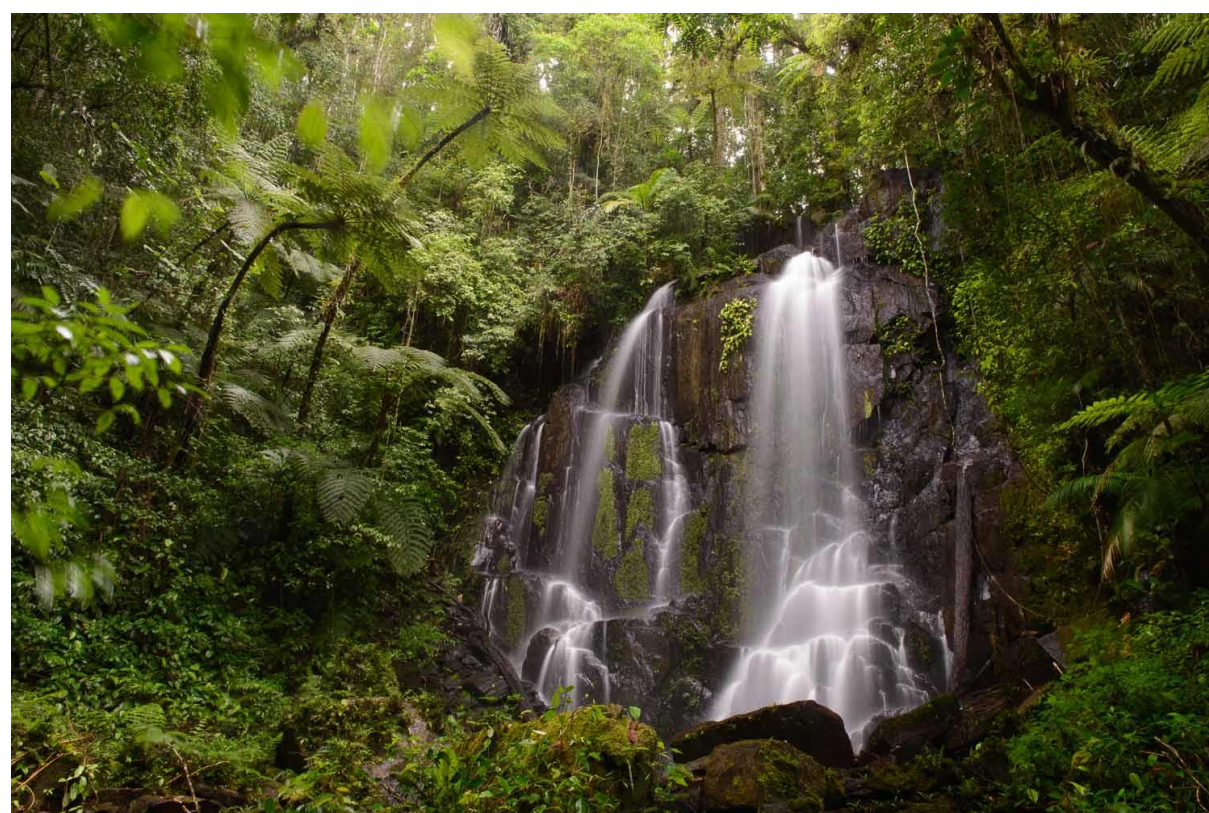


A private reserve of 32,000 ha located in the countryside of Goiás which is able to extract value from traditional businesses combined with activities of the green economy to maintain the forest.

RV also manages other territories in the Votorantim portfolio, totaling over **80,000 ha of managed areas**

Legado das Águas

Officially established as a private reservation in 2012 by CBA – Companhia Brasileira de Alumínio, Nexa, Votorantim Cimentos and Auren, managed by Reservas Votorantim and maintained by Votorantim.



31 THOUSAND HECTARES

5x the size of Cantareira Park in São Paulo

10x the size of Tijuca Forest in Rio de Janeiro

85% OF THE TERRITORY

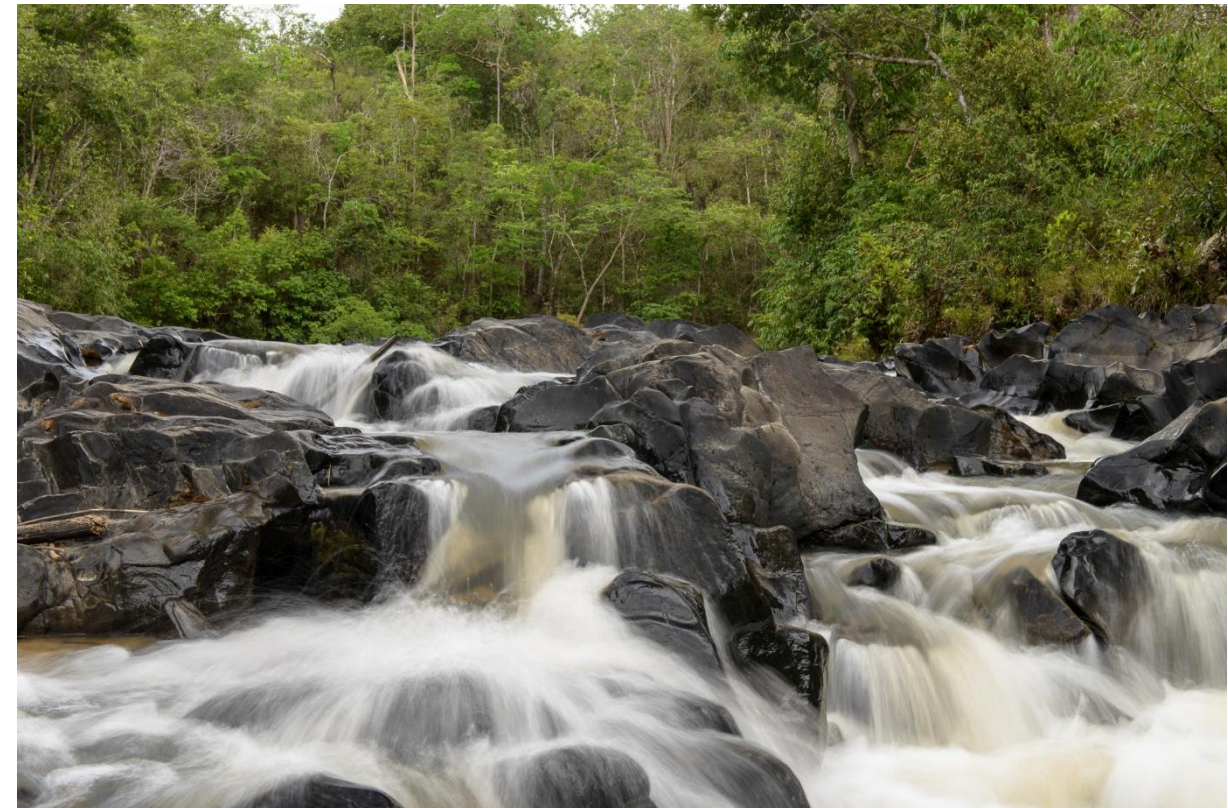
Native forest in advanced conservation stage

Legado Verdes do Cerrado

Home of the first REDD+ project in the Cerrado biome, the LVC territory is owned by CBA and managed by Reservas Votorantim. The reserve is 80% composed of native Cerrado and is organized in two areas:

ENGENHO

22,000 ha conservation area incorporating the green economy.
Additional 5,000 ha of livestock and agriculture with forestry integration.



80%
of conserved
Cerrado in
Engenho

SANTO ANTÔNIO SERRA NEGRA

Over 5,000 ha of native Cerrado vegetation



100%
of untouched Cerrado
in Serra Negra



Business model of the reservations

Forest and Biodiversity Conservation

Revenue Generation

Environmental Compliance Services

Reforestation and Plant Production

Partnerships, Ecotourism and Leasing

Carbon Credits

Agriculture and Livestock

Public Goods

Biodiversity Centers

Scientific Research

Monitoring and Education

Legado Verdes do Cerrado: issuance of the first REDD+ project in the Cerrado biome

Legado das Águas: developing a novel methodology to issue carbon credits from the Atlantic Forest

Legado das Águas: Rare territory in an advanced stage of conservation, becoming a new model of private protected area.



Legado Verdes do Cerrado: Private reserve that combines traditional businesses with new economy activities.



Carbon and biodiversity

Through Legado das Águas and Legado Verdes do Cerrado, we invest in the dynamics between carbon and biodiversity to carry out activities, research and actions **focused on forest conservation.**

The areas add up to **63 thousand hectares of preserved** native forest, storing more than **20 million tons of carbon.**

By integrating the carbon credit market in Brazil, **we intend to enhance initiatives and foster new methodologies** that find in forest protection a viable alternative for maintaining biodiversity.



Carbon Credit and PES

We implemented **the first REDD+ project** in the Brazilian Cerrado and developed a methodology for Payment for Environmental Services (PES), including carbon, in the Atlantic Forest, pioneering the **generation of carbon credits in these biomes.**



PSA Carbonflor

PSA Carbonflor is an innovative methodology based on Payment for Environmental Services (PES) for the Atlantic Forest biome presented by Reservas Votorantim.

The issue being addressed: current international methodologies do not consider specifics related to legislation, biomes and phytophysionomies, land tenure and ownership considerations, biodiversity, and other ecosystem services present in conserved areas. This generates exclusion and injustice, in addition to favoring illegal deforestation.

The significant advancements of the methodology include:

- Connecting conservation, PES and voluntary carbon markets, contributing to conservation of the remaining 12.4% of this biome
- Engagement of support from specialists and researchers domestically and abroad
- Meeting the principles enshrined in the Paris Agreement
- Advancing the goals of decarbonization
- Promoting the defense of biodiversity through the conservation of forests

CARBONFLOR
PSA

Em parceria com
ECCON
SOLUÇÕES AMBIENTAIS

reservas
VOTORANTIM

www.reservasvotorantim.com.br

reservas
VOTORANTIM